

The Glamorgan-Gwent Archaeological Trust



HALF-YEARLY REVIEW 2014 AND ANNUAL REVIEW OF PROJECTS 2013-2014



The Glamorgan-Gwent Archaeological Trust Ltd
Heathfield House Heathfield Swansea SA1 6EL



Cover images from left: Logo for the Archwilio app which was launched last winter ©The Glamorgan-Gwent Archaeological Trust Ltd. Photograph of one of the many winter storms which revealed potential new sites for investigation by the Afordir project © B. Salter. Neath Abbey, the northern end of the western facade showing the church (left) and the latbrothers range (right) ©The Glamorgan-Gwent Archaeological Trust Ltd. Aerial view of the Cyfarthfa coke works during archaeological investigation © Crown Copyright: Royal Commission of the Ancient and Historical Monuments of Wales. Munitions worker ©West Glamorgan Archives. All images are from GGAT publication 'Discovery and Learning 2014' August 2014.

Contents

REVIEW OF CADW PROJECTS APRIL 2013 — MARCH 2014.....	2
GGAT 1 Regional Heritage Management Services.....	2
GGAT 43 Regional Archaeological Planning Management and GGAT 92 Local Development Plan Support.....	6
GGAT 100 Regional Outreach	8
GGAT 103 Morgannwg-Gwent Arfordir	14
GGAT 118 Accessing Archaeological Planning Management Derived Data	16
GGAT 129 Southeast Wales Medieval and Early Post-medieval (c1100-1750) sites: Cistercian Granges Glamorgan and Gwent.....	18
GGAT 130 Southeast Wales and the First World War	19
GGAT 131 Survey and Building analysis at Neath Abbey	20
REVIEW OF CADW PROJECTS APRIL 2014 — SEPTEMBER 2014.....	23
GGAT 103 Morgannwg-Gwent Arfordir	23
GGAT 118 Accessing Archaeological Planning Management Derived Data	24
GGAT 130 Southeast Wales and the First World War	26
GGAT 132 Southeast Wales Medieval and Early Post-medieval Sites (c AD1100-AD1750): Lowland Rural Settlement in Glamorgan and Gwent	26
GGAT 133 Southeast Wales Medieval and Early Post-medieval Sites (c AD1100-AD1750): High Status Settlement in Glamorgan and Gwent.....	27
FUTURE PROGRAMME OCTOBER 2014 — MARCH 2015.....	29
GGAT 1 Regional Heritage Management Services.....	29
GGAT 100 Regional Outreach	29
GGAT 103 Morgannwg-Gwent Arfordir	29
GGAT 118 Accessing Archaeological Planning Management Derived Data	29
GGAT 130 Southeast Wales and the First World War	30
GGAT 132 Southeast Wales Medieval and Early Post-medieval Sites (c AD1100-AD1750): Lowland Rural Settlement in Glamorgan and Gwent	30
GGAT 133 Southeast Wales Medieval and Early Post-medieval Sites (c AD1100-AD1750): High Status Settlement in Glamorgan and Gwent.....	30
CADW-FUNDED SCIENTIFIC CONTRACTS	31
POST-EXCAVATION AND PUBLICATION REVIEW	31
Possible Projects for Contingency Funding and 2015 — 2016 Outline Project Proposals	31
APPENDIX 1 — Review of the delivery of Welsh Government Objectives	32

REVIEW OF CADW PROJECTS APRIL 2013 — MARCH 2014

GGAT 1 Regional Heritage Management Services

We report progress against the four main headings of the Curatorial Works Specification¹ agreed between Cadw and the Welsh Archaeological Trusts and the two additional tasks that were undertaken.

A. Information and advice to national and local government

The Trust continues to supply information, advice, and support to Cadw on issues to do with the condition of the historic environment. In the reporting period, Trust staff accompanied Cadw's Senior Inspector on a visit to assess the suitability of the surviving remains of a Second World War testing station on the North Gower coast for scheduling. We also investigated a number of claims of damage at scheduled sites and other historic environment features that had been reported to us by local contacts, and forwarded information to Cadw where appropriate. These included finds eroding from deposits in Cat Hole cave, Gower, and damage to scheduled cairns at Llanfabon.

Nicholston Tomb, Gower was visited with a Cadw Inspector following a report of fire damage by a member of the public. Site visits were also made to a number of Gower sites with the Cadw Field Monument Warden and Gower Landscape Partnership staff regarding future projects involving Scheduled Ancient Monuments. Information was provided to the City and County of Swansea Countryside Team for display boards on Swansea Bay.

Information and advice was given to a Reynoldston Community Councillor regarding proposed work to the village well, and a previously unrecorded well was reported to the Trust by a Bishopston Community Councillor and added to the Historic Environment Record (HER).

We responded to Welsh Government consultations on proposals for the revision of the Glastir agri-environment scheme, policies on protected landscapes, and the Environment Bill White Paper. For local government, we commented on drafts of new Management Plans for the Wye Valley AONB and the Gower AONB, arrangements for the provision of archaeological services in the Brecon Beacons National Park and the Brecon Beacons National Park Visitor Plan. We also provided input into guidelines on the conservation and management of rock-art sites that were

being drawn up by Newcastle University and Queen's University Belfast.



PI 1 Rhymney Union Ironworks upper furnace site

Trust staff have continued to represent historic environment interests on a variety of local authority-led committees which meet on a regular basis, such as the Gower Area of Outstanding National Beauty Partnership Group (Swansea), Caldicot Castle and Park management advisory group (Monmouthshire), the Brecon Beacons National Park Access Forum, Bridgend History and Heritage Forum, Merthyr Tydfil Heritage Forum. We have also provided input concerning the historic environment into plans being formulated by Caerphilly CBC (Rhymney

¹ The curatorial work specification also includes archaeological planning management works and these are reported below under Projects GGAT 43 and GGAT 92.

Ironworks), Rhondda Cynon Taff CBC (management of sites of historic interest as tourist attractions), Torfaen CBC (code of conduct for excavation on council-owned land), the Vale of Glamorgan CBC, and the Wye Valley AONB (potential new landscape partnership), and to Monmouthshire County Council (flood damage to a historic bridge over the Angidy at Tintern).

B. Information and advice arising out of projects funded by Cadw

The Trust has a regular commitment to work arising out of the pan-Wales projects on Historic Churches and Early Medieval Ecclesiastical sites, and the Caerleon Environs project. Trust staff provide the secretariat for the Caerleon Research Committee. Staff have also continued to sit on the Swansea and Brecon DAC as Diocesan Archaeological advisor. This involves six meetings a year, as well as consultations by email outside meetings, and site visits to assess the impact of proposed changes and to provide advice to the incumbent and parishioners; as well as the pre-Victorian churches surveyed as part of the pan-Wales Historic Churches project in the 1990s, we are also called upon to assess impacts on Victorian foundations. We also have an involvement with the Medieval Welsh Sculpture Panel, the successor to the National Committee for Recording and Protection of Early Medieval Inscribed Stones and Stone Sculpture, which now also takes in any follow-up work from the Glamorgan Medieval Ecclesiastical Sculpture project. We were instrumental during the course of the year in arranging meetings with local church representatives to discuss the care and interpretation of Early Christian monuments at Llancarfan and Merthyr Mawr.



PI 2 Swansea and Brecon Diocesan Advisory Committee visit to St Paul's Sketty

We also answered queries relating to the Gelligaer Registered Historic Landscape, the Glamorgan Coastal Hillforts project, the Roman Roads and *Vici* project, and the Romano-British Settlement Survey.

C. Information and advice on other matters concerned with conservation and the environment

During the course of the year, the Trust provided information and advice on the historic environment to other government departments and agencies, and other individuals and bodies.

Casework for the Glastir agri-environmental scheme is covered by a Memorandum of Understanding with the Rural Payments Division (RPD) of the Welsh Government, but management, development and review of the scheme is supported by Cadw under the Regional Heritage Management Services project. The Trust has been active in this area, attending the regular liaison meetings set up between the Glastir team, Cadw, and the Welsh Archaeological

Trusts, and also dealing with a range of issues via email. Whilst most of the Glastir work during the year was co-ordinated by RPD, some elements that were previously co-ordinated by the Forestry Commission were still being covered by its successor body, Natural Resources Wales (NRW), and we have therefore been liaising with NRW over these.

Outside Glastir, we continue to respond to queries about the impact specific forestry operations and woodland schemes will have on the historic environment, and to provide appropriate advice. Trust staff also attended the annual forestry liaison meeting, and took part in a training day for forestry personnel, Cadw, and the Welsh Archaeological Trusts on issues surrounding felling programmes and the historic environment. A number of consultations were undertaken with NRW regarding archaeological sites within forestry. A site visit was carried out to Mountain Ash to offer advice prior to proposed forestry work near a number of known and previously unrecorded archaeological sites. Consultations regarding proposed forestry work requiring advice included the Afan Vale Colliery, Pennsylvania Woods, Cefn Pwll Du mines and Gethin Quarries. The NRW Conservation and Heritage Manager visited the Trust offices for liaison meeting.

Trust staff provided information and advice to NRW and the National Trust in respect of damage caused by mussel pickers to the prehistoric peat deposits and shell middens at Whitford Point, with a view to improving the management of this fishery. We also responded to two consultations on agricultural improvements outside the Glastir scheme which were being considered under the Environmental Impact Assessment Regulations, and provided information and advice to the Ministry of Defence about future conservation work at the Caerwent Training Area, and have responded on site-specific matters pertaining to the CROW Act.



Pl 3 Tyre tracks evidencing damage to Prehistoric Peat Exposures (centre of photograph) at Whitford Point, Gower

In the marine environment, the Trust continues its involvement with the Severn Estuary Partnership, attending Severn Estuary Joint Advisory Committee meetings, and provides input into the Shoreline Management Plan Review through the Severn Estuary Coastal Group and the Swansea/Carmarthen Bay Coastal Engineering Group.

D. Information and advice to members of the public and community groups

The provision of HER information to members of the public continues to form a significant part of the heritage management workload.

The Heritage Management and HER teams provided individuals and communities in the region with archaeological information and advice in pursuit of their projects and interests. During the year 212 external enquiries were made as compared with 188 for the previous year. This rise in the overall number of consultations came from the commercial sector.

Figures for *Archwilio*, also show an increase in visits to the website: statistics for the period April 2013 to March 2014 indicate that there were over 13,434 visits to the home page (www.archwilio.org.uk). The number of unique visitors was 7,474, confirming repeated user visits.

<i>Year</i>	<i>*Total consultations addressed to Trust staff</i>	<i>Commercial</i>	<i>Public</i>	<i>Total visits to Trust</i>
2007—2008	266	110	156	68
2008—2009	241	144	97	46
2009—2010	188 external 190 internal	64	124	35
2010—2011	155 external 81 internal	65	90	13
2011—2012	176 external 76 internal	72	104	19
2012—2013	188 external 73 internal	75	113	13
2013—2014	212 external 92 internal	102	110	21

Table 1 Historic Environment Record Enquiries 2007-2014

<i>Year</i>	<i>Visits to homepage www.archwilio.org.uk</i>	<i>Unique visitors to homepage www.archwilio.org.uk</i>	<i>Total visits to GGAT homepage</i>	<i>Unique visits to GGAT homepage</i>	<i>% of Archwilio users visiting GGAT's area</i>
2011—2012	4,923	2,601	2,640	1,371	48%
2012—2013	6,626	3,258	2,641	1,265	20%
2013—2014	13,434	7,474	4,047	2,220	12%

Table 2 Statistics for the Archwilio HER Public Access Website 2011 2014

**These exclude consultations for the Countryside Council for Wales, the Forestry Industry, and Public Utilities, etc, which are reported elsewhere.*

Statistics available for users going straight to the GGAT *Archwilio* search page from April 2013 to March 2014 remain much the same as the previous year, totaling 4,047 visits with 2,220 unique visitors. Referral from the Archwilio Home Page (www.archwilio.org.uk) equates to c40% for this period. At 40% traffic coming directly from www.archwilio.org.uk this gives a 12% ratio of all users visiting the main site who then go on to the GGAT *Archwilio* search page.



Pl 4 Prehistoric Footprints at Port Eynon

A site visit was undertaken at the request of a Bridgend farmer requesting advice regarding a number of sites (some unrecorded) on his land. Following the visit information was passed to RCAHMW and the geology department of Swansea University.

The majority of the site visits carried out during the year were undertaken as a consequence of reports of storm damage over the winter. Although many of these new discoveries were made by our Arfordir volunteers (as reported below under GGAT 103), some were investigated and reported under this project. The most significant of these other discoveries was the exposure of human footprints at Port Eynon, on the peat deposits first revealed in 2009 on the foreshore (a discovery covered by Radio 4). The Gower coast had also been the location of a site visit earlier in the year, when Trust staff went out to examine human remains that had been unearthed on Oxwich beach.

Additional Tasks

The Trust continued to support the Twentieth Century Military Structures Group and, as outlined above, the Glastir Scheme.

GGAT 43 Regional Archaeological Planning Management and GGAT 92 Local Development Plan Support

Planning Statistics 2013—2014 (see Appendix 2)

The archaeological planning services provided on behalf of Cadw require the Trust to initially assess all of the region's planning applications and to notify the planning authorities of archaeological constraints to proposals, giving information and specific recommendations on the best course of action required to protect archaeological interests whilst enabling permitted development. Thereafter, and with the combined resources provided by all twelve regional authorities, archaeological planning management has provided further detailed services, such as the provision of archaeological briefs for pre-determination assessments, approving detailed specifications submitted by developers and monitoring the work from inception and fieldwork to the production of the final report.

The 2013—2014 detailed statistics of the responses to planning applications made by the archaeological planning team, which vary from recommending desk-based assessments and intrusive field evaluations in the predetermination period of planning applications through to the attachment of appropriate archaeological conditions on planning consents, are attached as Appendix 2.

In 2013—2014 there was a slight decrease (1.5%) in the number of applications registered by the Local Planning Authorities in Southeast Wales, at 13,324 down from 13,537, however, the last quarter showed a rise against last year, at 3,451 from 3,299. Despite the slight drop in overall numbers there was a significant rise (15.84%) in the number of applications where detailed advice for archaeological work was provided (480 as opposed to 404). This detailed advice included ten instances when we objected to the proposed development on the grounds that it would have an unacceptable impact on the archaeological resource, the same as last year, and 118 (up from 81)

applications where we advised the LPA that additional information on the impact of the proposed development on the archaeological resource would need to be provided by the applicant prior to the determination of the planning application.

The number of applications where we recommended that conditions requiring archaeological work to be undertaken should be attached to the planning consent increased from 323 to 362. These conditions can be divided into three types, those requiring programmes of archaeological investigation (such as excavations, intensive watching briefs) of which there were 124 (up from 117); those requiring an archaeological watching brief to be conducted during the development 153 (up from 130); and those requiring buildings and structures to be recorded 92 (up from 69).

The team has also been involved in five planning appeals providing information and written advice to the Planning Inspectorate.

Screening and Scoping Environmental Impact Assessments

The Town and Country Planning Environmental Impact Assessment (England And Wales) Regulations 1999 requires developers to consult LPAs as to the need or not for an Environmental Impact Assessment (EIA) to be submitted with a planning application for large developments



(screening). If it is determined that an EIA is required, they can request that the issues required to be covered by the EIA are outlined by the LPA and a methodology for the study is agreed (scoping).

The number of large-scale developments being proposed in Southeast Wales, especially in regard to renewable energy generation, including wind turbines and large scale photovoltaic arrays has remained at a similar level in 2013—2014 and

PI 5 Coking Works Cyfarthfa

required us to comment on 77 screening requests (last year 77) and 23 scoping consultations (last year 26) during the year.

Major development impacts

A number of large-scale and complex development projects continue to be initiated in south east Wales and the service continues to commit considerable time and effort in ensuring that the historic environment is carefully considered during the planning process and that mitigation measures including preservation in situ and excavation are included in these developments. This year these developments have included in particular excavations at the Newport City Centre Redevelopment that recorded the remains of medieval and post-Medieval buildings and ahead of construction works that impacted on the Coking Works, Cyfarthfa, Merthyr Tydfil.

Utilities

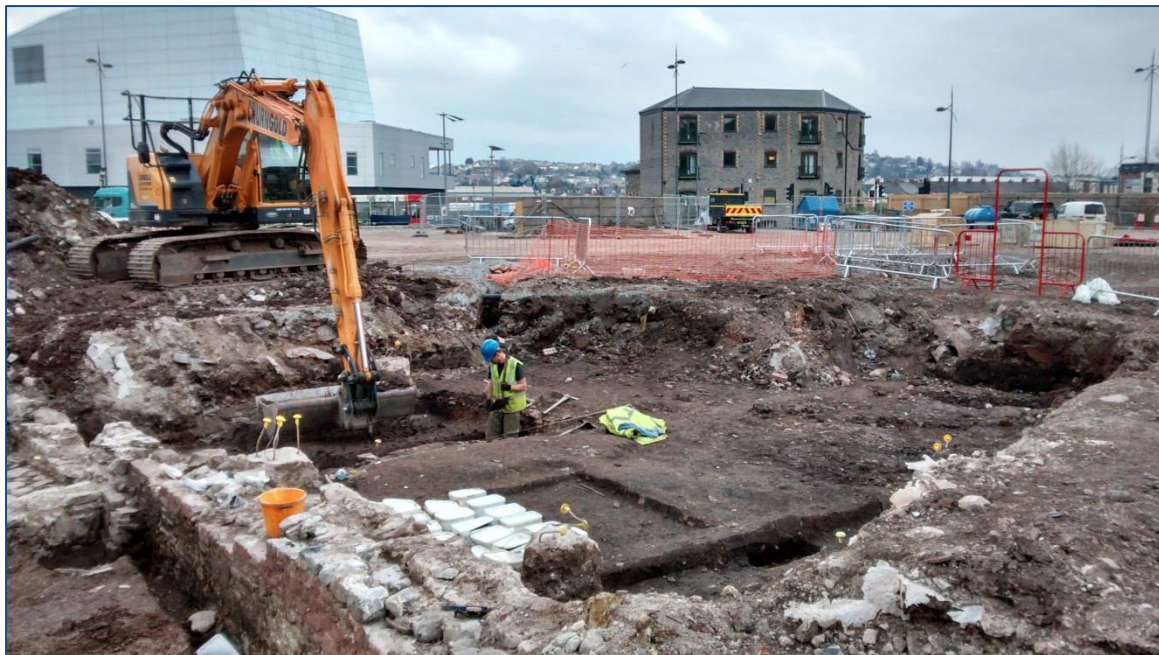
The Trust has continued to provide advice to the utility companies on the impact of their works on the archaeological resource; we were consulted on 229 proposals in 2013—2014 (299 in 2012—

2013). Following our advice, archaeological monitoring of some of these developments has led to a number of historic environment interests being recorded, particularly in the Monmouth area.

Local Development Plans

During the year the Torfaen CBC, Bridgend CBC, Brecon Beacons National Park Authority and Monmouthshire CC Local Development Plans were adopted. The Trust has provided input to the development of these plans, attending meetings to discuss proposals and providing advice on the impact of development on the archaeological resource in regard to land proposed for allocation in the plans.

Alternative Candidate Sites for Neath Port Talbot CBC, Cardiff CC, Vale of Glamorgan CBC and Monmouthshire CC were reviewed. In Southeast Wales eight Local Development Plans have now been adopted and work is continuing on the development of the other five.



PI 6 Newport City Centre Redevelopment

GGAT 100 Regional Outreach

The object for which the Glamorgan-Gwent Archaeological Trust is established is to advance the education of the public in archaeology. The Trust takes an active role in the provision of diverse opportunities for the public to engage with archaeology, some of which are supported by Cadw.

Our project proposals were left sufficiently flexible for us to be able to include consumer-led services in our provision. Reporting is under the main headings of our outreach programme, with specific goals for the year highlighted in the appropriate section.

Have accessible presence at public events in defined outreach program including presence at 2013 Festival of Archaeology; incorporating our specific goals of: Organising events as part of the 2013 Council of British Archaeology Festival of Archaeology

Out of the seventeen events attended by Trust staff in 2013—2014, thirteen were facilitated with Cadw funding of some description. Collaborative events with Cadw are reported separately.



PI 7 Festival of Archaeology Main Event Swansea

As in previous years, our main flagship event was held at Swansea Museum as part of the Festival of British Archaeology. The organisations attending the heritage fair element were Garw Valley Garden History and Heritage, Glamorgan Young Archaeologists Club, Swansea Metal Detecting Club (including one member's collection of flints), two groups from Swansea University (Egyptian and Coptic Studies, and the Centre for Medieval and Early Modern Research at

Swansea University (MEMO)). The event was also supported by, representatives from our Arfordir groups, and a group of Welsh Bacchelaureate students from Dylan Thomas School who presented the results of their survey of the walls of the Swansea Canal in the Hafod, undertaken as part of community project carried out by the trust at the Hafod-Morfa Copperworks for the University. Talks were given on the Hafod-Morfa Copperworks Community Excavation, the Margam Abbey Community survey project, and churchyard yews. Demonstrations, workshops and living history included Roman cookery, medieval coining, medieval re-enactors from Meibion y Ddraig, and paratroopers of the Second World War. There were also children's activities including face-painting based on Iron Age motifs, and a mock excavation.



PI 8 GGAT Tent at Oystermouth Castle

The Trust also collaborated with Swansea City Council and the Friends of Oystermouth Castle on an event at the castle, providing finds handling advice, a range of children's activities, and information about the 2009—2010 community excavation. The 'Living in Bronze Age Caldicot' event, organised by the Trust in collaboration with Monmouthshire County Council, was expanded with the inclusion of staff from the National Museum of Wales. Activities included displays of Bronze Age finds and demonstrations of prehistoric

spinning, weaving and other textile crafts. Other activities provided during the fortnight under the auspices of the Cadw outreach grant were two guided walks, and a children's workshop at Monmouth Museum focused on the Romans, organised in conjunction with Monmouthshire County Council, which featured mosaic-making and Roman food.

Other events in which the Trust participated were heritage days at Bridgend and Blaenau Gwent, with a focus on the archaeology of these specific local authority areas, a presentation on work on the Vulcan House brewery at Merthyr Tydfil, and the Swansea Baefest, where display of an

aurochs horn and red deer antler from the prehistoric deposits in the intertidal zone caused great interest and enthusiasm.



PI 9 GGAT Stand at Swansea Baefest

Collaborate with Cadw in an event or events for the Festival of Archaeology at Caerphilly Castle, Neath Abbey or Tintern Abbey

The Trust took part in Cadw-led events at all three of these venues, providing children's activities, including a very popular wattle-and-daub workshop, Historic Environment Record consultations at Neath, and a walking guide to architectural history at Caerphilly and Tintern. The Neath Abbey event dovetailed with our Community survey project (GGAT 131 see later in this report).

Talks and guided walks, incorporating our specific goal of: Working with Cadw, and other bodies such as the Brecon Beacons National Park, the Friends of Margam Park, the Glamorgan Heritage Coast, Mumbles Tourist Information Centre, in order to develop joint programmes of walks and cycle rides to promote the Welsh Government's Health and Fitness agenda

A full programme of talks and guided walks was arranged for the year. The majority of the talks take place in the winter and the walks in the summer.

Out of the twenty-four talks given to societies and other members of the public by the Trust during the financial year, nine were funded out of the outreach project; talks were also given under the aegis of the Arfordir and the First World War projects. The audiences included local history societies, student groups, church and charity groups, and branches of the University of the Third Age.

Eighteen walks out of the twenty-one provided by the Trust during the financial year were funded through the regional outreach programme, with others provided as part of the Arfordir project. Our partners in these included the Brecon Beacons National Park Authority, Mumbles Tourist Information Centre, and the Ramblers' Association. Some were run in connection with festivals

like the Festival of Archaeology, the Brecon Beacons National Park Geopark Festival, the Gower Walking Festival, and the Love2Walk Festival.

Exhibitions and leaflets, incorporating our specific goals of: Mount exhibitions at more venues and deliver leaflets and other 'pick-up' outputs to more collection points

Exhibitions, displays, and leaflets were provided on eighteen separate occasions as part of the Trust stand at events, or in association with talks and guided walks.



PI 10 GGAT Stand at Cadw-led Neath Abbey Heritage Day

Outreach via the GGAT website, incorporating our specific goals of: Upgrading information provided on the Trust website

The 2013 Half Yearly Review was uploaded to the Trust's newly redesigned website, and a blog was created for the Neath Abbey survey. The normal method of informing web visitors of new information is via social media. During the year, 496 items were posted on Facebook, 136 news stories were posted on Blogger, Wordpress, Tumbler and LinkedIn, 60 images were added to Instagram, and the Trust originated 262 tweets, besides retweeting items expected to be of interest to our followers.

Devise, and post on the Trust's web site, pages devoted to major excavations that have been carried out during the first 25 years of the Trust's existence.

Work was commenced on the creation of pages on the series of major excavations and six of the most significant excavation projects of the 1980s have been reviewed. Work was progressed in respect of the civil settlement at Caerleon carried out by the Trust with Cadw support in the

1980s. These are being designed so that visitors who wished to find more information about the results would be able to access it at a series of levels (for example full publication, grey literature pdfs, powerpoint, slideshare).

Statistically during the year, there were 7,062 unique views of our website, and a percentage taken from the session data indicates a 68% increase in new visitors.

Maintain existing, and develop further, links to local/national government departments, businesses and third sector organisations, incorporating our specific goal of: Building on the success of the Llandow Eisteddfod to strengthen ties with National Museum Wales, looking to collaborate with them in at least one event.

Our main collaboration with the National Museum was over the Bronze Age event at Caldicot, where the resources added by the museum added significantly to what we had been able to achieve with the same event in the previous year. We hope that, now the museum has passed through its reorganisation, we will be able to regain this momentum and collaborate further in the future.

During the year, we continued to collaborate with Blaenau Gwent CBC, Bridgend CBC, Merthyr Tydfil CBC and Swansea CBC in encouraging local interest in the local historic environment through forums and heritage days. We also opened dialogues with Rhondda Cynon Taf CBC and Torfaen CBC.

Community archaeology, incorporating our specific goal of: Meet with representatives in our twelve unitary authorities to discuss how the Trust can work with them in delivering archaeological outreach to their local communities (through for example better links with County Voluntary Organisations or Voluntary Services and Communities First).

During the course of the year, the Trust's Community Archaeologist contacted the County Voluntary Organisations or Voluntary Services and Communities First groupings covering all of our area. Further discussions with some of these groups led to the provision of activities for communities in Clydach (Swansea) and Glyncoed (Neath Port Talbot) during the reporting year, and the organization of a series of workshops in the new financial year.

It is apparent that in many community and voluntary sector co-ordination and supporting bodies there is a deficit in awareness of what the historic environment means and how it can be used to engage and upskill communities. This could be addressed through a series of awareness raising seminars and workshops, perhaps best delivered in partnership with other heritage sector bodies.

Education

Seven school students in years 10 and 12 undertook a week's placement with the Trust, giving a total number of 245 work experience hours. A further fourteen students from Cardiff University and Swansea University, on formal work experience or undertaking non-accredited voluntary work, undertook 278 hours into Cadw-funded projects between them. Trust staff also ran a day of workshop sessions for 90 children at a school in Merthyr Tydfil.



PI 11 Learning and interactive event at Cyfarthfa Junior School

Indicator		
No. events run and / or attended by Trust staff with WG funding		49
No. of participants / attendees at events		
	Talks	445
	Walks	221
	Attending stands at shows	1,304
	Excavation open days etc	30
Number and hours of volunteers involved with WG-funded projects		
	Number of volunteers	133
	Hours contributed	1,662
No. of schools events / number of attendees		
	Number of events	1
	Number of attendees	90
No. of events and activities / number of attendees where primary audience are in areas of multiple deprivation		
	Number of events	4
	Number of attendees	175
Work Experience, training etc activities / and hours		
	Number of participants	33
	Hours Contributed	903

Table 3 Glamorgan-Gwent Archaeological Trust public engagement statistics relating to activities funded with government grant monitored by Cadw that relate to defined performance indicators for the financial year 2013-14.

GGAT 103 Morgannwg-Gwent Arfordir

The Arfordir project was primarily marked by the severe storms in January 14 and the impact they had on all sections of the South Wales coastline, destroying and damaging coastal sites, while also exposing new sites and features. This proved to be test of the effectiveness of the Arfordir concept of using volunteers to monitor the archaeology of their local coastline.

Volunteers from the previous study areas continued to be supported in their independent work, whilst the study area was extended to include the stretch of coastline from Ogmere-by-Sea to Penarth. This incorporates the fourteen mile long stretch of Glamorgan Heritage Coast, which runs from Porthcawl to Aberthaw. New volunteers were recruited to cover this area, and a new group was established at Margam to fill a gap in the coverage of the coast further east. The advertising and recruitment stage of the project followed the successful approach adopted in the previous years, with press releases, leaflet drops, advertising to local societies and councils, and writing to volunteers from previous community projects. The new Margam group was established among volunteers who had previously worked on the Margam Abbey Community Survey project. A number of volunteers have also been recruited to the project through more informal means; volunteers that attended these initial presentations told others about the project and these people then became involved. The Arfordir project also had a presence at a number of events held in coastal locations over the year.



PI 12 Arfordir Volunteers with exposed wreck at Sker Beach

Following on from the volunteer recruitment stage, training sessions, field visits and guided walks were held to equip volunteers with skills for recording sites. Their independent work was also supported by project staff undertaking site visits with groups in the study area, resulting in many new sites being reported. In delivering this, the Trust has also enabled members of the local community, local interest groups, history groups and university students to learn more about the coastal archaeology in the area. It has also provided them with the information and skills to allow

them to take an active role in monitoring and recording sites threatened by erosion, and to identify new sites, with minimal supervision from professional archaeologists. The primary output of the project is data entered into the regional Historic Environment Record (HER).

New media continued to play an important part in providing cohesion, exchanging information, and communicating with a wider audience. The website pages were updated, with changes to the overall design, to the gallery, and to the downloadable resources. Guidance on using social media for the project was also created and includes guidance on the different types of websites/applications that are used and how to use each website/application. It is hoped that through providing this information and making social media less intimidating that there will be an increase to volunteer usage of these sites.

The Arfordir Social Media streams are steadily increasingly in popularity, with the Twitter account and especially the Facebook page growing in interest with the projects volunteers and the general public, who have been commenting on, 'liking', and sharing posts. The page has been used to advertise walks, post photographs, ask general advice, and to advertise other Cadw grant-aided projects. It was also has been of particular use in mobilising groups to record features that were discovered following the storms in January 2014..



PI 13 Rossili Gower, cliff collapse adjacent to deserted medieval village

Following the storms the trust received a large number of notifications from Arfordir volunteers via email and through social media about archaeological coastal sites that had been damaged/destroyed or revealed. It became imperative that in order to mitigate any loss to the archaeological resource all Arfordir volunteers needed to be mobilised. Fifteen field visits were made in the period January to March. Amongst the more notable discoveries were a ship's wheel from Swansea Bay, more animal prints on a newly uncovered section of the peat shelf at Kenfig, further human remains at Monkash, the wreck of an iron-hulled vessel between Cwm Nash and Nash Point, cannon at Rest Bay, Porthcawl and the wreck of a wooden vessel at East Aberthaw. A few of the newly exposed sites provided excellent opportunities to undertake further training

with the groups. A training day on measured and offset recording was carried out in February at the exposed iron-hulled wreck at Nash Point, with a further day recording the East Aberthaw wooden vessel in March. Loose artefacts from other sites were recovered for conservation, some in association with other local interest groups. These discoveries generated a considerable amount of media interest. In addition to regional press and media outlets, the BBC invited Trust staff to take part in Radio 4 'The World at One' programme on an item designed to launch an equivalent archaeological coastal monitoring project in England.

As the Cadw-funded project approaches the end of its intended lifespan, attention has also focussed on ensuring that volunteer involvement can continue without the same level of input from the Trust. Handover meetings were held with the North Gower, South Gower, Porthcawl and Vale of Glamorgan groups to help equip them to be more self-sufficient. The coming year should see the complete coming-of-age of the project, as Cadw funding comes to an end.

GGAT 118 Accessing Archaeological Planning Management Derived Data

This project is designed to enhance the Historic Environment Record (HER) with information from grey literature reports, resulting from the planning process, to improve access to the resource and facilitate the role of archaeological planning and wider research in the archaeology of Southeast Wales. Paper sources are being digitised to approved standards to aid their preservation.

Through the use of volunteers, the Trust intends to enable members of the local community, community groups, history groups and local university students to learn more about the HER and general archaeology of Southeast Wales, and provide them with the knowledge of how archaeology is factored into the planning process, as well as transferable IT and cartographic skills.

The HER and Archaeological Planning Management staff are training the volunteers and providing them with the skills and knowledge to enable them to update/edit existing sites or add new sites and archaeological events to the HER, how to search and retrieve information from the HER and its use as a research tool. It is intended that through this project, raised awareness of available archaeological resources, such as the HER, will be created and spread throughout the wider community. In turn, awareness of the importance of the archaeological resource of Southeast Wales, both *in situ* and that preserved through record will be promoted. This task was identified as of High Priority in the 2010 Historic Environment Record Audit.

The period 2013—2014 saw the second year of this project, in what is a longer term programme to add grey literature information to the HER dating between 1978 and 2009. The second year focussed on recruitment of volunteers between the ages of 18 and 30, identified as an underrepresented demographic amongst the group of volunteers at the Trust.

Following on from the first year, a number of methods were used to advertise the project as widely as possible and recruit volunteers. A bi-lingual project leaflet/poster was created, advertising the project under the name 'Access to Archaeology'. This briefly outlined the aims of the project, and provided links for further information, application details and contact details. The leaflet was emailed to existing contacts in the trust's volunteer database, circulated within the internal student email system of Cardiff University's History and Archaeology department and sent to other organisations within the sector for wider distribution such as museums, universities, colleges, councils, record offices, volunteering organisations, back-to-work schemes, libraries, national parks and government agencies. In addition hard copies were available for people to pick up at various outreach events attended by the Trust. The bi-lingual micro-website and blog were updated (<http://accesstoarchaeology.blogspot.co.uk>). As well as a project overview, the site contained a volunteer application pack, further information about the Trust and the HER, and contact details. The address for this site was included on the leaflet/poster. The project was advertised on the Trust's website's news pages, and other related blogs. Links to the project

micro-site were provided so interested people could go straight to the project site to find out more. The total number of volunteers recruited was 28 each of whom spent at least three weeks working on the project.

Recruitment strategies also included social media and volunteering organisations outside of the heritage industry. Social media proved a useful tool in recruiting volunteers, with project advertisements on the GGAT Facebook page being shared and staff contacted via Facebook for further information. The advertisement had over 2,000 views following its initial posting. It was also promoted in collaboration with external voluntary schemes - three of our volunteer work placements within the project were in association with TBG Learning, the Neath Port Talbot Council for Voluntary Service and the Gwent Association of Voluntary Organisations.

Training for volunteers throughout the course of the project included a mixture of structured group and one-to-one training and more informal support and assistance on an individual basis as and when required. The main aspects covered by the training were:

- Role and remit of the HER;
- Recording archaeological sites, events and artefacts;
- Creating new archaeological records;
- Reading cartographic sources;
- Using the HER software and other computer programmes;
- Using the HER as a research tool;
- Use of Geographical Information Systems;
- The context of archaeology in the Welsh Planning process;
- Best practice for the digitisation and preservation of paper and digital sources.

The work programme involved the assessment of 434 reports held in the HER report archive dating between 1995 and 1998 (inclusive). The assessment involved determining whether the reports contain material that would be recorded as an Event record in the HER, if the information has already been recorded on the HER as an Event, and also if the information recorded in the reports has been recorded as Core (site) records in the HER.

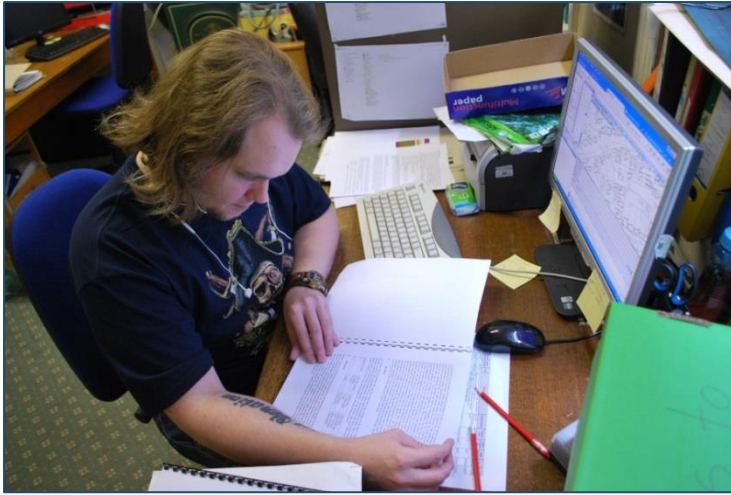
All relevant information which had not already been recorded on the HER was then recorded, previously existing records were checked for accuracy and completeness and the necessary relationship links between Core, Events, Artefacts, and Bibliographic records were made.

The results of the assessment of all 434 reports were as follows;

- Reports that were only bibliographic references to an event 6;
- Duplicate reports 21;
- Reports where all information had already been added to the HER 3;
- Reports that had been superseded or revised by a later version 4;
- Reports that lie outside the coverage area of GGAT's HER 8;
- Reports that do not constitute an Event record in the HER 22;
- Reports that were missing 27;
- Reports requiring information to be added to the HER 346.

From the 346 reports requiring information to be added to the HER, the following figures relate:

- Number of new Event records created 354;
- Number of new Core records created 111;
- Number of new Artefact records 878;
- Number of edits to existing Event/Core records over 7,651;
- Number of Event areas added to MapInfo 346;
- Number of PDFs created 214.



PI 14 Access to Archaeology Volunteer

Initial quality assurance was undertaken as each record was completed; more thorough quality assurance was then undertaken at the end of every month.

PDF versions of the reports were only created where the Trust held the copyright for the report, as permissions needs to be sought from other organisations before proceeding. Other organisations were approached for permission to digitise paper copies of reports or, where available, to supply copies of these reports in a digital format to the HER. Whilst a

number of permissions were received, permissions from more organisations are required prior to incorporating the digitisation of other organisations' reports into the project in future years.

The 214 digitised Glamorgan-Gwent Archaeological Trust reports were made available to access through the Archwilio website as well as in the Trusts HER system. Each report was linked to the individual HER Events and sites to which it refers.

The focus applied to the 18—30 demographic allowed more tangible wider impacts of the project to be measured. For example, through providing transferrable skills such as aptitude for learning, interpersonal skills, reliability, timekeeping and independent working for the medium term unemployed thereby allowing those volunteers to have an up-to-date reference for their CV. Work experience for students and recent graduates helped them to gain hands on skills to secure employment.

GGAT 129 Southeast Wales Medieval and Early Post-medieval (c1100-1750) sites: Cistercian Granges Glamorgan and Gwent

Following on from a scoping project conducted in 2010 which reviewed the need to assess various classes of site dating to the medieval and post-medieval periods, a project examining Cistercian grange sites in Glamorgan and Gwent has been undertaken by the Glamorgan-Gwent Archaeological Trust with grant aid from Cadw. The project used a two stage approach of appraisal followed by detailed assessment on a final selection of sites. The project entailed an initial rapid desktop appraisal of some 131 medieval grange and related sites. The appraisal identified sites considered destroyed, poorly located, or relating to other Orders (ie not Cistercian), and made a selection based on these findings. In this way some 119 Cistercian granges or related sites were selected and further assessed in detail against set criteria, of these 41 were selected for a field visit, though visits were only undertaken to a sample of 24 sites, due to limits of access and owner permission.

The work confirmed that of the 119 grange sites 31 sites were considered to be of, or potentially of, National Significance, including the existing Scheduled Ancient Monuments, and 15 sites were considered to be potential Regional Significance, the remainder judged to be either of minor or unknown interest. Recommendations for further work, primarily survey and conservation have been made.

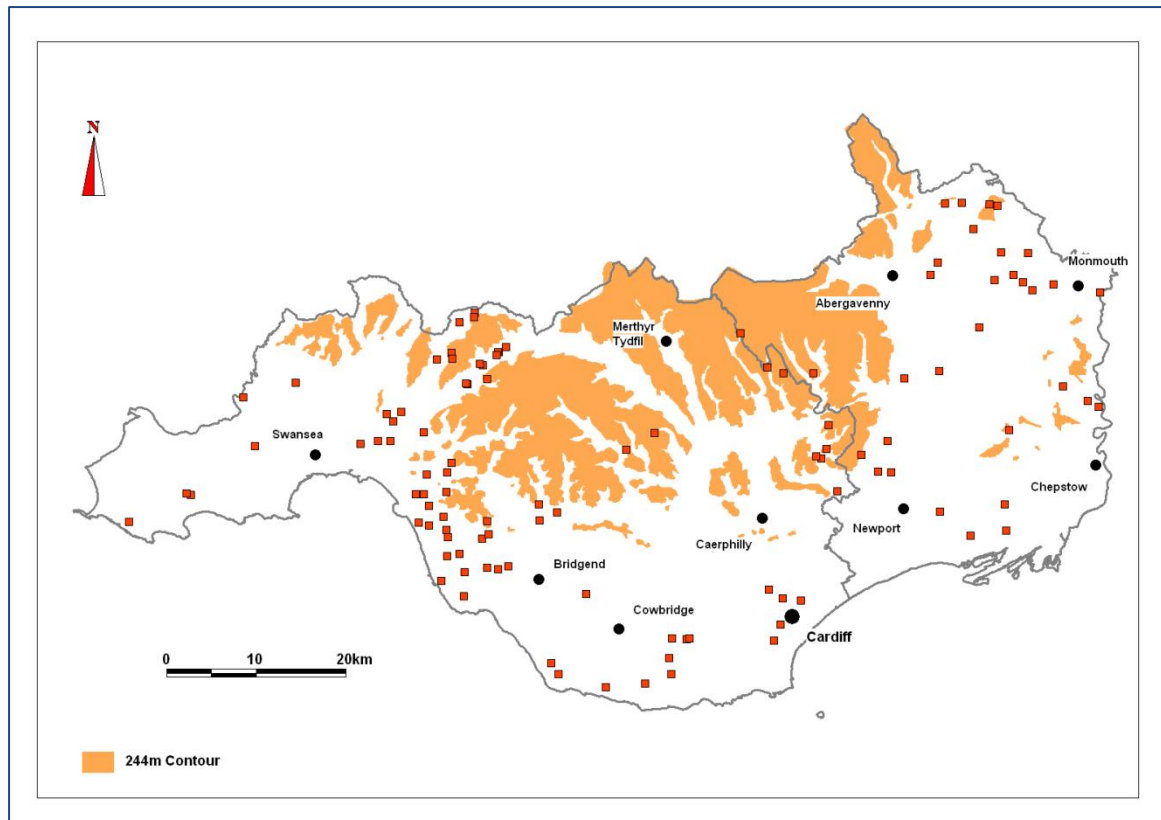


Fig 1: Grange Sites Showing Overall Significance

GGAT 130 Southeast Wales and the First World War

The project was undertaken to establish baseline data relating to actual and potential archaeological sites relating to the First World War within Glamorgan and Gwent. The recent centenary of the outbreak of the First World War is the catalyst for a number of commemorative activities. In this context it was realised that the physical impact of the First World War on the home front, and therefore the archaeological legacy, had been relatively neglected.

In order to address the lack of visibility regarding the archaeology of the First World War, Cadw commissioned the Welsh Archaeological Trusts to undertake a scoping report to assess the type and variety of First World War related sites across their respective areas.

For the Glamorgan Gwent Archaeological trust, the study involved:

- A rapid appraisal of information relating to the First World War within the HER;
- A rapid appraisal of sites relating to the First World War from other information sources;
- Identification of sites suitable for further study;
- Identification of sites that may require legal protection in the form of Scheduling or Listing.

The project involved initial consultation of the regional Historic Environment Record and the National Monument Record sources to establish the level of existing knowledge, followed by a trawl of regional archives, libraries, and museums for information that could lead to the identification of sites associated with the First World War and by extension to sites that had potentially survived. Visits were made to the Glamorgan Archives, the West Glamorgan Archives, and the Gwent Archives, local museums, the reference collections held in Swansea, Newport, and Cardiff Central libraries, and to selected sites. Map regression was an important element of

the project methodology, with each individual site being assessed and compared in the cartographic sources.

Social media and internet search engines were used to solicit information from a wider general public. Sites were searched for using the thematic criteria identified for conflict archaeology found in the Council for British Archaeology's 'Modern Military Matters' (Schofield 2004) and 'Twentieth Century Military sites' (EH 2003)

A total of 335 sites across Glamorgan and Gwent were identified during the course of the study, only 53 of which were known previously. A total of 282 new sites were identified as a direct result of the work undertaken, and the project has succeeded in its aim of establishing the variety, nature and extent of survival of the majority of First World War related sites within Glamorgan and Gwent, as well as having identified a number of sites that may benefit from further research and potential subsequent legal protection.

References:

English Heritage, 2003, *Twentieth Century Military Sites: current approaches to their recording and conservation*, English Heritage

Schofield, J., 2004. *Modern Military Matters: Studying and managing the twentieth century defence heritage in Britain: a discussion document*, English Heritage



PI 15 Drawing mouldings of monk's refectory door as part of Neath Abbey Survey

GGAT 131 Survey and Building analysis at Neath Abbey

A three-week programme of survey was carried out at Neath Abbey, on the church, cloister and west range, and those parts of the east and south ranges that were not incorporated into the later

Tudor mansion, all of which had been the subject of photogrammetric surveys commissioned by Cadw in the 1990s. The purpose of the proposed project was to carry out an EDM survey, collate the individual photogrammetric images to produce a composite image of each wall and, using these data, to examine and analyse the fabric of the lay-brothers' range to provide a definitive account of the architectural development. The composite photogrammetry images would then be further combined to produce a 3D model of the building. Although the Tudor mansion was the subject of a detailed architectural study by RCAHMW (published in volume 4 part 1 of the Glamorgan Inventory), very little analysis had previously been carried out on the rest of the abbey, and that concentrated mainly on the church. It was hoped that detailed examination would enable a more complete understanding of its development, in particular the lay-brothers' range (the west claustral range), and how it was converted into a copper-works in the early 18th century. Although the church had less scope for a new interpretation, having already been the subject of study, it was considered that it still provided an excellent training opportunity, with the possibility that new information might emerge.

Students from the School of Classics History and Egyptology of Swansea University and one student on placement from Cardiff University carried out the fabric analysis under the supervision of a member of Trust staff and a lecturer from Swansea, a member of Neath Antiquarian Society also helped with the fieldwork. Three Cardiff students whose placement did not fall so conveniently within the period of the project fieldwork, and four other members of the Neath Antiquarian Society who wanted to work on a drop-in basis, drew the principal architectural ornament that was accessible at the time of the survey, the remains of which were more extensive than had previously been recognised.

We had hoped that archive photography would help to elucidate the transformation of the west range for metal smelting. Neath Antiquarian Society made available the archive of photographs from the site clearance in the 1930s, but documentation of the various parts of the abbey complex was vary variable, with most of the interest concentrated on the church: there was nothing that recorded any of the industrial fittings. Two photographs were made available by the Royal Commission on Ancient and Historical Monuments in Wales (RCAHMW) from the Britain from Above project, neither of which was helpful in documenting industrial use. The west range in general seems to have attracted no attention: 18th and 19th century artists obviously planned their viewpoints with the aim of excluding this part of the complex, and the only depiction traced which was specifically of 'The copperworks in Neath' (by Paul Sandby, 1779) chose a distant view across the river, in which only a row of *lilliputian* chimneys and a cloud of smoke appear of the works themselves.



PI 16 Neath Abbey Students surveying the west range

Despite the fact that it did not prove possible to run the project according to its original design, the new information provided has enabled us to make significant advances in our understanding of the abbey's development. The conventional view has always been that the earliest surviving structure on the site is the Early English west range. However, carefully study of alignments has shown that it is much more likely that it is predated by the south range (also Early English in style), and that the west range was on the slightly different alignment that was also used for the Decorated church. Thanks to the recognition of a straight joint on the east wall, it has also been possible to demonstrate that the main part of the west range, as originally built, was shorter, and that it only attained its present length as the result of a second phase of construction. It is clear that the construction of the south end of this range must have required the demolition of the previous buildings opening off the southwest corner of the cloister, and probably also the lowering of the ground surface to create a terrace on which it could stand.

The survey has also thrown up a whole series of new questions. How does the fragment of first-floor mural passage to the church on the old alignment in the northwest corner of the cloister fit in? Where was the door to the original, almost square, north room of the west range before its division into two? None of the three surviving doors is a really satisfactory candidate. Is this connected with the blocking of the ground floor east window in the common room? The only surviving stair to the upper floor of this range was built into the secondary dividing wall, so where was the original staircase to the dormitory on the upper floor. What is the purpose of the rectangular bases against the presbytery arcades. It is possible that some of these questions could be answered in the future by a programme of geophysical survey and excavation, as well as careful recording during any conservation work.



PI 17 GGAT Staff demonstrating EDM at Cadw led Neath Abbey Festival of Archaeology Event

A number of the students took part in the event arranged by Cadw on the weekend the project finished, and were able to take visitors around the abbey buildings to point out their new discoveries. This, and the opportunity to learn about the EDM surveying techniques that were being demonstrated by the Trust's geomatics officer, proved very popular with the public. In contrast, very little work was possible with schoolchildren, owing to the lack of interest

shown by local schools in taking up the opportunity. However, we were able to provide a linked classroom session for one local primary school which had arranged a site visit before they knew of the project.

REVIEW OF CADW PROJECTS APRIL 2014 — SEPTEMBER 2014

GGAT 103 Morgannwg-Gwent Arfordir

The project has concentrated on strengthening the existing groups; and creating a complete coverage of the Glamorgan coastline. All the original groups have continued to be supported. The Porthcawl U3A group has taken over the Ogmore to Southerndown area. In addition to guided walks, a building survey training day was held at Nell's Point for the Barry/Penarth Group, while Offset Recording training was provided to the South Gower group. Both days were extremely successful, with volunteers gaining confidence in their fieldwork skills. All the groups have continued to be active, regularly undertaking fieldwork and monitoring visits and continuing to return completed recording forms. These are entered into the project database as they are received, and, where possible, polygons of the sites are drawn in MapInfo.



PI 18 Volunteer from the Barry/Penarth group recording the remains of the Static Searchlight Battery at Nell's Point, Barry. Vale of Glamorgan previously unrecorded on the Historic Environment Record

Further fieldwork along with small scale excavations are planned for the future, as this was something that had been repeatedly requested through volunteer feedback.

Updates to the website which include an update to the design, gallery, and to the downloadable resources have been planned and have mostly been implemented with outstanding work planned to be completed soon. The Arfordir Facebook page is steadily increasingly in popularity, with a growth in interest from members of the general public who have been commenting on and liking recent posts about the fieldwork undertaking as part of the project.

Volunteer engagement has been widespread, the verbal and written feedback on the work of the project to date has been very positive, while the ongoing commitment of volunteers and the sustainability of the project has been demonstrated by the extent of independent survey work conducted by the volunteers.



PI 19 Recording a wreck on the Beach at Llangennith. The South Gower group undertook offset recording training on the exposed remains of a possible coal barge on Llangennith Beach.

GGAT 118 Accessing Archaeological Planning Management Derived Data

This project is designed to enhance the Historic Environment Record (HER) with information from grey literature reports, resulting from the planning process, to improve access to the resource and facilitate the role of archaeological planning and wider research in the archaeology of Southeast Wales. Paper sources will also be digitised to approved standards to aid their preservation.

Through the use of volunteers, the Trust intends to enable members of the local community, community groups, history groups and local university students to learn more about the HER and general archaeology of South Wales, and provide them with the knowledge of how archaeology is factored into the planning process, as well as transferable IT and cartographic skills.

The HER and Archaeological Planning staff are training the volunteers and providing them with the skills and knowledge to enable them to update/edit existing sites or add new sites and archaeological events to the HER, how to search and retrieve information from the HER and its use as a research tool. It is intended that through this project, raised awareness of available archaeological resources, such as the HER, will be created and spread throughout the wider community. In turn, awareness of the importance of the archaeological resource of Wales, both in situ and that preserved through record will be promoted. This task was identified as being one of 'High Priority' in the 2010 Historic Environment Record Audit.

This is the third year of a longer-term project, to see the entire HER grey literature archive backlog added to the HER and digitised. Where possible, this year focused on retaining volunteers recruited in the previous two years as well as engaging new volunteers.

Volunteer recruitment material was produced in May. This included the following elements; advertisement leaflet, updates to the existing project microsite <http://accesstoarchaeology.blogspot.co.uk/>, new application pack and additional details of the project. Eighteen volunteers applied by the set deadline in June and since then a number of other people have enquired about the project and placed on a reserve list. The current total stands at sixteen volunteers having participated in the project; eleven continuing from the previous year and five new placements. The project microsite is designed to run throughout the project and amongst other things allows participants to record their experiences. During August four student placements at the Trust also had the opportunity to work on the project, bringing the total involved in the project so far this year to twenty.

The work programme in the current year involves the assessment of 539 reports held in the HER report archive dating between 1999 and 2001 (inclusive). The assessment involves determining whether; the reports contain material that would be recorded as an Event record in the HER, the information has already been recorded on the HER as an Event, and the information recorded in the reports has been recorded as Core (site) records in the HER. All relevant information which has not already been recorded on the HER is then recorded, previously existing records are checked for accuracy and completeness and the necessary relationship links between Core, Events, Artefacts, and Bibliographic records are made.

So far (up to 12th September 2014), a total of 81.5 volunteer days have been contributed to the project. One-to-one training has been carried out with each volunteer and the provision of staff support is continuously on-going as and when required. The figures below detail the results of the assessment to date of 375 of 539 reports in the project database.

- Reports that are only bibliographic references to an event: 0
- Duplicate reports: 10
- Reports where all information had already been added to the HER: 3
- Reports that had been superseded or revised by a later version: 10
- Reports that lie outside the coverage area of GGAT's HER: 16
- Reports that do not constitute an Event record in the HER: 1
- Reports that are temporarily unavailable or missing from their boxes: 13
- Reports requiring information to be added to the HER: 317

From the 317 reports requiring information to be added to the HER, the following figures relate:

- Number of new Event records created: 278
- Number of new Core records created: 19
- Number of new Artefact records: 945
- Number of edits to existing Event/Core records: over 2000
- Number of Event areas added to MapInfo/Wales HER: 222
- Number of PDFs created: 66
- Number of records quality assured and approved: c97% of 317 reports assessed so far (initial quality assurance has been undertaken as each record is finished, more thorough quality assurance has been undertaken at the end of every month).

So far this year four volunteers who have completed their placement have detailed their experience through the blog on the project's micro website <http://accesstoarchaeology.blogspot.co.uk/>.

GGAT 130 Southeast Wales and the First World War

This project was not scheduled to commence before October 2014, but some advance works have occurred. The Trust has started a general publicity campaign including the production and use at shows of display boards, and social media interventions. Trust staff also attended launches of related events by other partners working in the specific historic environment and wider heritage sectors.

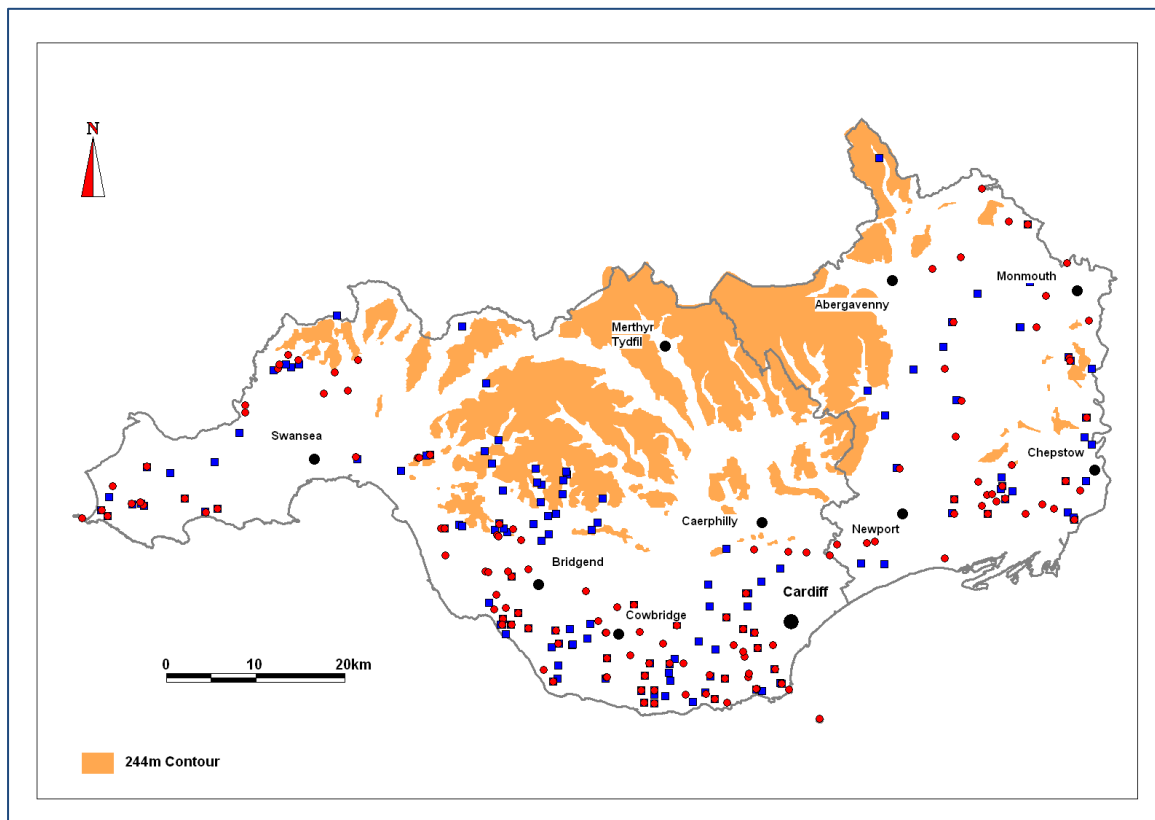


Fig 2 Lowland Settlement: HER sites appraised (red) and NMR sites appraised (blue)

GGAT 132 Southeast Wales Medieval and Early Post-medieval Sites (c AD1100-AD1750): Lowland Rural Settlement in Glamorgan and Gwent

An initial desktop appraisal of 291 (141 PRNs/150 NPRNs) registers for medieval and early-post medieval lowland settlement sites for Glamorgan and Gwent, using Historic Environment Record (HER) data, National Monument Record (NMR) data, and other appropriate sources, has been undertaken; this identified some 166 relevant registers (84 PRNs/82 NPRNs) for lowland settlement sites and 46 related features, which are being taken forward and to be fully assessed. In addition, some 326 (139 PRNs/187 NPRNs) registers covering potential settlement related features were also identified – these are being examined as part of the relevant lowland settlement sites to which they belong. Part of the appraisal process was to cross reference the initial HER and NMR data against sites below the 244m OD contour line covered by the Deserted Rural Settlement (DRS) project, and exclude the vast majority of those sites (3 PRNs not previously visited under the DRS project have been included).

The desk-top assessment utilised HER data, NMR data, and other appropriate sources. Initially a selection of 106 registers (51 PRNs/55 NPRNs) representing potential candidate sites have been identified for potential field visits; a final selection of 20 sites will be made from these based on likely survival/quality of the remains and final access/owner permission. To this end Land Registry searches are currently being progressed to identify landowners, so that any required access permissions can be obtained. Based on the previous years' experience it is intended that the field visits will be undertaken during the third quarter of the current financial year, when site visit conditions relating to vegetation cover should be at their optimum.

Following completion of the field visits a general report will be compiled with updated descriptions of all sites, and condition/significance information, and recommendations for protection (i.e. scheduling) will be included in a separate report.

To date the following tasks have been completed:

- Assemble site dossiers digital & paper data;
- Consultation of the NMR (RCAHMW) to check for further information on sites, where lacking in the HER;
- Desktop appraisal (of 291 registers);
- Digital mapping, including polygon preparation (initial only for selected sites following appraisal);

The following tasks are in progress:

- Digital mapping, including polygon preparation – on going;
- The selection of sites for field visits (20 sites from 106 registers);
- The identification and contacting of landowners;
- Continued search for additional secondary sources – on going.

GGAT 133 Southeast Wales Medieval and Early Post-medieval Sites (c AD1100-AD1750): High Status Settlement in Glamorgan and Gwent

An initial desktop appraisal was undertaken on 240 registers (162 PRNs & 78 NPRNs) relating to potential abandoned (i.e. non occupied) medieval and early post-medieval high status settlement and related sites for Glamorgan and Gwent, using Historic Environment Record (HER) data, National Monument Record (NMR) data, and other appropriate sources, has been undertaken; this identified some 80 registers (39 PRNs/41 NPRNs) relating to definite medieval and early post-medieval high status settlement sites with some element of abandoned structures, which were taken forward to be fully assessed.

The desk-top assessment utilised HER data, NMR data, and other appropriate sources. Initially 44 registers (20 PRNs/24 NPRNs) have been selected as potential candidate sites for potential field visits; a final selection of 15 sites will be made from these based on likely survival/quality of the remains and access/owner permission. To this end Land Registry searches are currently being progressed to identify landowners, so that access permission can be arranged. Based on the previous years' experience it is intended that the field visits will be undertaken during the third quarter of the current financial year, when site visit conditions relating to vegetation cover should be at their optimum.

Following completion of the field visits a general report will be compiled with updated descriptions of all sites, and condition/significance information, and recommendations for protection (i.e. scheduling) will be included in a separate report.

To date the following tasks have been completed:

- Assemble site dossiers digital & paper data;

- ❑ Consultation of the NMR (RCAHMW) to check for further information on sites, where lacking in HER;
- ❑ Desktop appraisal (of 240 registers);
- ❑ Digital mapping, including polygon preparation (initial only for selected sites following appraisal).

The following tasks are in progress:

- ❑ Digital mapping, including polygon preparation – on going;
- ❑ The selection of sites for field visits (c. 20 sites from 44 registers);
- ❑ The identification and contacting of landowners.

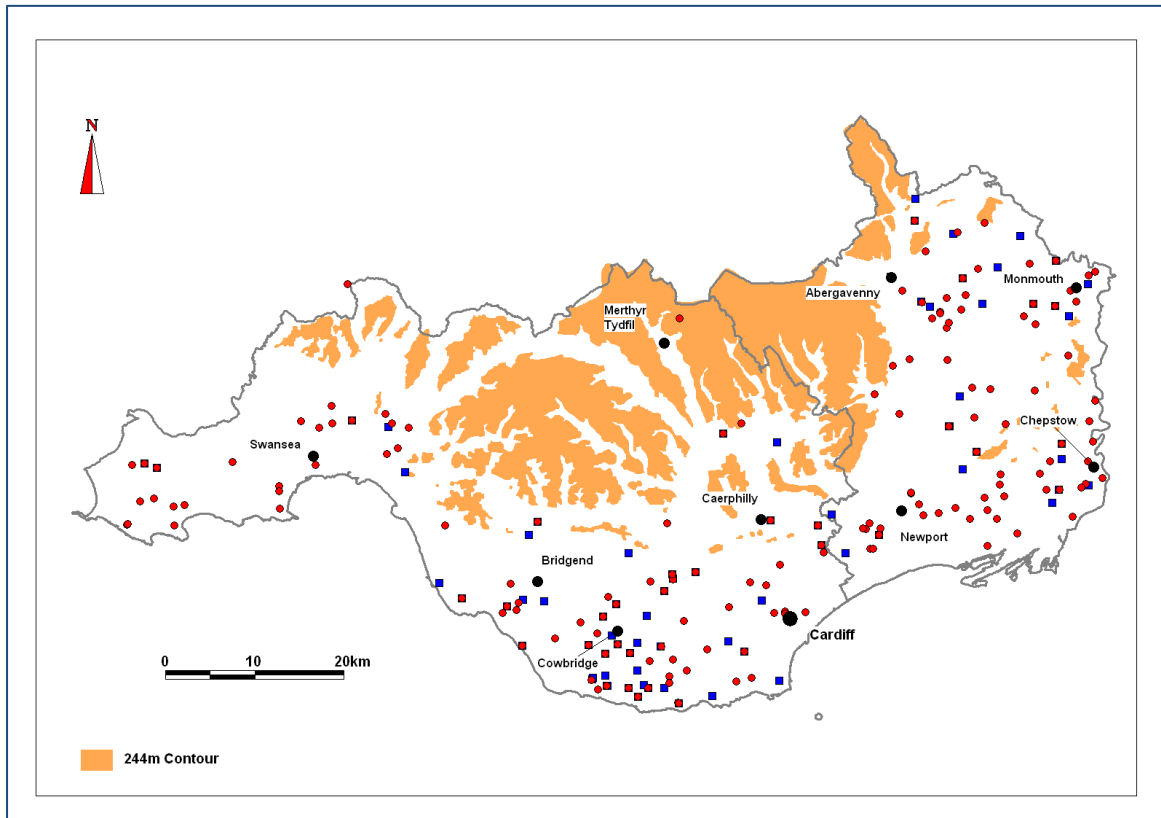


Fig 3 High Status Settlement: HER sites appraised (red) and NMR sites appraised (blue)

FUTURE PROGRAMME OCTOBER 2014 — MARCH 2015

GGAT 1 Regional Heritage Management Services

The Heritage Management Section of the Trust will continue its regional remit to provide wide-ranging and detailed archaeological heritage management and outreach services, based on the agreed services provision. This will include the provision of Historic Environment Record information and advice to enquirers and initiatives to increase our outreach to the general public. Detailed statistical information will continue to be provided to Cadw in our regular monitoring reports.

In the forthcoming half year specifically, the Heritage Section will:

- Attend Twentieth Century Military Seminars;
- Arrange thirteenth Regional Heritage Forum;
- Provide further assistance with the development of Glastir if required.

GGAT 100 Regional Outreach

During the second half of the year we will:

- Devise and post on line one or two leaflets for self-guided walks or cycle rides with a historic environment theme;
- Put together a series of finds handling collections for use at events, and for loan to schools;
- Promote existing exhibitions and leaflets to a wider audience;
- Upgrade information provided on the Trust website. New project information, covering work carried out for Cadw in 2013—14, will be provided in the Half-Yearly Review section of the Cadw pages;
- Continue to provide initial response advice to enquiries about possible Community Archaeology projects.

GGAT 103 Morgannwg-Gwent Arfordir

All established groups will continue to be supported. Two small excavations are to be carried out by the volunteers at Kenfig and Llangennith. The Nautical Archaeological Society will be carrying out a series of Foreshore training days for groups within the Vale of Glamorgan. Further fieldwork will continue and returned data and completed survey forms will be entered into the Historic Environment Record, with sites created as polygons where possible. A project report will be produced.

The project will now focus on delivering measures to assist the continued sustainability of the groups. Meetings are currently being set up with each of the groups to discuss strategies for forward planning with regards to maintaining the groups and continuation of their fieldwork.

GGAT 118 Accessing Archaeological Planning Management Derived Data

The current project will be brought to completion during the fourth quarter. Remaining tasks entail: the assessment of a further 164 reports under the criteria identified, addition of further information to the Historic Environment (HER) based on the results of this assessment, addition of the remaining Event areas to MapInfo and the creation of PDFs for all Trust reports, and those of third party depositors who give assent, as well as on-going support and quality assurance checks. A final report will also be produced at the end of the project.

GGAT 130 Southeast Wales and the First World War

During the second half of the year we will carry out the following tasks:

- ❑ Desktop appraisal utilising the HER and secondary sources;
- ❑ Consult the NMR (RCAHMW) to check for further information on sites, where lacking in HER;
- ❑ Identify from documents, historic mapping, aerial photography of surviving and potential new sites within the project area;
- ❑ Undertake site visits to ascertain extent and condition of surviving remains;
- ❑ Create written and photographic inventory of surviving remains;
- ❑ Evaluate remains to determine their importance in both a regional and national perspective;
- ❑ Prepare grey literature reports;
- ❑ Prepare popular version of results for dissemination via the Trusts website and its Discovery and Learning publication;
- ❑ Mount website pages.

GGAT 132 Southeast Wales Medieval and Early Post-medieval Sites (c AD1100-AD1750): Lowland Rural Settlement in Glamorgan and Gwent

The current project will be brought to completion during the third/fourth quarter.

The main outstanding tasks are:

- ❑ Undertake field visits to c20 sites (including a small sample of SAMs for comparative purposes) to assess condition/significance;
- ❑ Update digital data;
- ❑ Produce of short action report including details of assessment, fieldwork and a site gazetteer;
- ❑ Produce separate annex report to detail scheduling recommendations;
- ❑ Integrate new data in HER (HER enhancement).

GGAT 133 Southeast Wales Medieval and Early Post-medieval Sites (c AD1100-AD1750): High Status Settlement in Glamorgan and Gwent

The current project will be brought to completion during the third/fourth quarter.

The main outstanding tasks are:

- ❑ Undertake field visits to c15 sites (including a small sample of SAMs for comparative purposes) to assess condition/significance;
- ❑ Update digital data;
- ❑ Produce of short action report including details of assessment, fieldwork and a site gazetteer;
- ❑ Produce separate annex report to detail scheduling recommendations;
- ❑ Integrate new data in HER (HER enhancement).

CADW-FUNDED SCIENTIFIC CONTRACTS

There was no requirement for any draw down advice and support as available under these arrangements.

POST-EXCAVATION AND PUBLICATION REVIEW

The database of all 'grey' literature reports produced for Cadw has been maintained. In the past year the reports listed below have been produced.

Crawford, J *GGAT 130 First World War Scoping Study* GGAT Report No **2014/025**

Evans EM *Building survey and analysis at Neath Abbey: Interim report* GGAT Report No **2014/026**

Goldsmith L *GGAT 118: Accessing Archaeological Planning Management Derived Data* GGAT Report No **2014/050**

Huckfield PW *Emergency Recovery of Skeletal Remains, Cwm Nash, Vale of Glamorgan* GGAT Report No **2014/002**

Huckfield PW *GGAT103: Arfordir Coastal Survey* GGAT Report No **2014/024**

Roberts R *GGAT 129: Cistercian Granges in Glamorgan and Gwent* GGAT Report No **2014/002**

POSSIBLE PROJECTS FOR CONTINGENCY FUNDING AND 2015 — 2016 OUTLINE PROJECT PROPOSALS

Contingency Funding

We have submitted a further application to carry out emergency excavations at Monknash.

We expect to submit an application to accelerate integration of 'Grey Literature into the Historic Environment Record.

2015—2016 Outline Project Proposals

These have been presented in a separate document.

APPENDIX 1 — Review of the delivery of Welsh Government Objectives

In our project proposals for 2013—2014 we set out how these would amongst other things address certain Welsh Government objectives and more particularly help deliver some of the objectives of the Strategic Statement for the Historic Environment in Wales, and in doing both things benefit the populace of Southeast Wales. Following completion of the works we now briefly review achievement against the wider agenda and provide more detail in regard to specific Historic Environment objectives.

The programme has allowed skilled graduate professional Historic Environment staff to be retained in Southeast Wales. The work carried out by these staff generates other archaeological and related employment whether by the Trust or other organisations. It is difficult to calculate how many full and part time jobs were created or sustained by the planning process, but it is estimated that excavations and other investigations carried out by archaeological organisations, both large and small, across the region resulted in the generation of the equivalent of 40-60 full time jobs. Graduates, sometimes with further degrees or additional professional qualifications, hold the majority of these jobs, but the profession is open to non-academic entry routes.

For some areas of work whilst connections with high-level strategies are apparent measurement of total impact is more difficult given the consultation and advisory communication pathways. This is particularly true for our Heritage Management services project. Certainly, the partnerships developed and sustained with national government and local government have contributed to the protection and understanding of more local heritage.

Our Outreach project and certain of our community driven projects clearly assist a wide range of goals by supplying information on the historic environment to communities and individual members of the public, and assisting them to develop skills that not only help them to research the history and archaeology of their areas but can also improve their life-experiences. This has been assisted by deriving funding from the Heritage Lottery Fund through the Council of British Archaeology which has allowed the employment and workplace learning training of Community Archaeologists over the past three years. This resource ceased in October 2013 and, with no alternative replacement, our capacity to deliver these agendas was initially reduced, but we are actively pursuing other funding sources. Our Arfordir project is also at the same time raising awareness of climate change issues and impacts, our ability to mobilise volunteer recording following the storms at the start of January 2014 served to demonstrate the value of the project investment. The agenda is also supported by our works in imparting knowledge through booklets, lectures, exhibitions, web-based applications, and providing opportunities for volunteers to experience archaeological exploration. By integrating professional staff, volunteers, students, and academics through common interest cross-social strata bonding and synergies were enhanced.

For planning works measurement is clearer, thus in 2013—2014 there were 118 cases where additional information on the archaeological resource was required by the Local Planning Authority to assist determination and 362 recommendations that planning consents only be issued with conditions requiring archaeological work to be undertaken during the development. Detailed information on the impact of proposed development on the archaeological resource was considered on 1,189 applications. Our Archaeological Planning Management team have been assisting all the Unitary Authorities in the Region with the development of their Local Development Plans ensuring that the historic environment is fully considered in the preparation of the Local Development Plans and that an appropriate Strategic Environmental Assessment is carried out. The results of this work will not be fully recognised until the Local Development Plans have been adopted and implemented.

In promoting a rich and diverse culture the Trust has continued to contribute to raise awareness of the wealth of historic landscapes and archaeology in our area. Our dissemination is commensurate with many Welsh Government commitments through developing, or indeed re-

invigorating a sense of place. Wales benefits from high quality landscapes and a wealth of archaeological sites and historic monuments. Preserving and enhancing this quality is important for Wales to be a place where people choose to live and work. Our monument assessment works support the provision of landscape wide data in both rural semi-rural and urban context and allow authoritative statements to be made on the distinctiveness of Southeast Wales as a region.

The publication of the Strategic Statement for the Historic Environment for Wales with supporting action plans linked to the delivery of cross-sector objectives for the betterment of Wales and its inhabitants has allowed us to focus particular achievement reporting against the declared statement aims. This report is made against the 2013 Statement as the projects in this review were designed to support delivery of some of the goals in the detailed action plan underlying *that* Statement. These are summarised in the following table.

<i>Objectives</i>	<i>Targets (where specified)</i>	<i>GGAT Actions</i>
A) Heritage Protection and sustainable development	<p>a) Legislation and associated measures</p> <p>b) Heritage at risk</p> <p>c) Heritage and sustainable development</p>	<p>Related Projects</p> <p>Work carried out as part of GGAT 1 and 43 has contributed to all three target areas; work carried out as part of GGAT 43 has contributed to target areas b) and c); work carried out as part of GGAT 129 and 130 has contributed to target area c).</p> <p>We have continued to maintain effective Archaeological Planning and Heritage Management Services through partnership with Cadw, the 12 Unitary Authorities in Southeast Wales and the Brecon Beacons National Park. Alongside routine case work and strategic planning development works, we have continued to integrate the GGAT Historic Environment Record more fully with some planning authorities, have supported the further development of the Glastir agri-environment scheme and have invested in the further development of the GGATHMS (GGAT Heritage Management System) - the digital element of the GGAT Historic Environment Record which allows both off-site and on-line operability – and the improvements to the storage of paper and photographic archives.</p> <p>The Trust responded to fifteen national or local government consultations, this included several relating to the possible future structure of the Welsh Historic Environment in the context of a proposed Heritage Bill.</p> <p>We have undertaken specific programmes to review monuments of medieval and early post-medieval origin and also to establish a baseline for historic environment interests that relate to activities shortly before, during, and immediately after the First World War, with a view to identifying those that needed better protection.</p> <p>The Trust raised awareness of the Historic Environment through advocacy. It provided advice to a wide range of regulatory and non-regulatory bodies on a range of matters pertinent to the Historic Environment.</p>

<p>B) Skills and opportunities</p>	<p>a) Developing skills in the community</p>	<p>Related Projects</p> <p>GGAT 100, GGAT 103, GGAT 118, GGAT 131</p> <p>We undertook a specific community project involving recording of the monastic remains at Neath Abbey (GGAT 131). Trust staff actively supported five community groups in investigating their heritage and continued to contribute and support Cadw's Community Archaeology Framework.</p> <p>We provided work-experience tasters for seven school students and another fifteen engaged with the Welsh Baccalaureate. Links with Cardiff and Swansea Universities were strengthened, specifically with Swansea University the Trust continued to utilise the American Exchange Programme Placement and also hosted seven work experience placements under the Key Heritage Skills Programme, seven students from University of Cardiff had one month long work placements in the summer vacation, some of this time was spent on grant-aided works.</p> <p>A Community Archaeologist Training Placement under the HLF Skills for the Future Initiative was in post until October 2013, and a placement specialising in Historic Environment Services was secured under a scheme led by the Institute for Archaeologists which ran until February 2014, both participants were subsequently retained in full employment with the Trust. These placements gave added value to grant-aided provision.</p> <p>The Trust continued to support initiatives particularly as led by the Institute for Archaeologists in developing good practice in early career training for the archaeological profession.</p> <p>The Trust has continued discourse at national/local level to identify pathways for better lifelong learning opportunities in the historic environment, this has included contributing to strategic statements and plans, and commenting on draft frameworks. In particular we supported and contributed to Baroness Andrews Culture and Poverty review (http://wales.gov.uk/topics/cultureandsport/publications/culture-and-poverty-kay-andrews-report/?lang=en).</p>
------------------------------------	--	---

<p>C) Public understanding and enjoyment</p>	<p>a) Interpretation and engagement</p> <p>b) Volunteering and participation</p> <p>c) Records, information and archives</p>	<p>Related Projects</p> <p>Work carried out as part of GGAT 103 related to all three targets; work carried out as part of GGAT 118, 131 related to targets b) and c); Work carried out as part of GGAT 100 related to target a); and work carried out as part of GGAT 129 and 130 related to target c).</p> <p>The Trust arranged and carried out an outreach programme including specific events linked to the Festival of Archaeology (http://ggatblog.blogspot.co.uk/2013/07/archaeology-for-all.html) and collaborative events with Cadw (at Neath Abbey) (http://ggatblog.blogspot.co.uk/2013/07/hands-on-heritage-day-at-neath-abbey.html) the programme also included a series of guided walks and talks. The Trust continued to deliver its specific outreach goals for 2011—2015.</p> <p>The Arfordir project has continued to be successfully carried out with over 60 volunteers recruited and trained, a number of new sites have been discovered on the Gower littoral, Swansea Bay and around Kenfig and Merthyr Mawr and erosion actively monitored (cf http://www.ggat.org.uk/arfordir/index.html). The particular value of the initiative was shown after the storms of January 2014.</p> <p>Our assessment projects have improved knowledge of the extent and quality of late-medieval and early post-medieval grange sites and sites relating to the First World War.</p> <p>We have continued to progress the linking of ‘grey literature reports to related PRNs in the Historic Environment Record, updating the record and then making this data publically available</p> <p>We have continued to support the work of the National Archaeological Archives Panel for Wales and assisted the review of the current issues for Welsh Archaeological Archives.</p>
--	--	--

